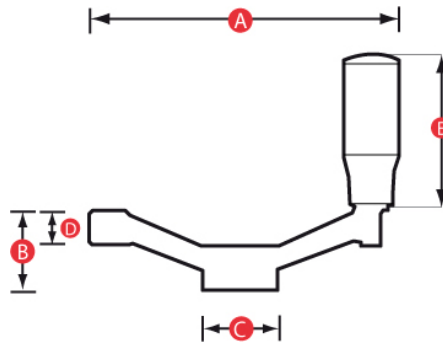
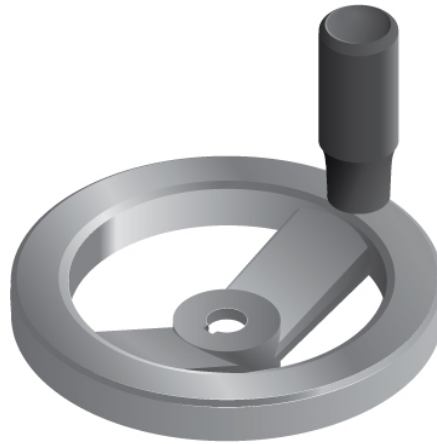




CONTROL HANDWHEEL - Aluminium



Pattern	Part No.	A	B	C	D	E	Bore size
70125	11813T	125	33	31	15	65	12mm
70140	11816S	140	36	36	16.5	65	14mm
70160	11814P	160	39	36	18	94	14mm
70200	11815W	200	45	42	20.5	94	18mm

Material:	Die-cast aluminium with duroplast revolving side handle
Number of spokes:	2
Standard handle colour:	Black
Colour options (handle):	All RAL colours can be produced - MOQs apply
Options:	Special bore sizes, keyways, side holes etc - MOQs apply

All our products are available in different materials (for example Polypropylene, ABS or different levels of glass filled nylon), with different insert materials (such as stainless steel, alloy or different zinc plating) and with different thread lengths and/or sizes. Please contact our Sales Team to see how we can help you save money AND get you exactly the product you need.

