

# Rencol

COMPONENTS

INDUSTRIAL MANUFACTURING SINCE 1923



# Rencol

## COMPONENTS

INDUSTRIAL MANUFACTURING  
SINCE 1923

*Rencol's flexible  
manufacturing capabilities,  
engineering expertise,  
global supply chain and  
market knowledge  
allow us to develop  
cost-effective product  
solutions that exceed our  
customers' expectations.*

## Who we are

In the early twentieth century Rencol developed engineered plastic solutions ranging from electric car batteries and recharging stations to the plastic "Joylight" internal combustion engine.

By the 1970s our focus on components had emerged and the Rencol name became synonymous with high quality plastic knobs, handles and handwheels.

### Today, we continue to grow, adapt and innovate:

- Our product range is extensive, industry-standard and growing.
- Our manufacturing partners are in key international locations, each chosen for their expertise, compatibility with our values and cost effectiveness.
- Our distribution network is worldwide and expanding.
- Our global supply chain has been in successful continuous operation for over a decade.

## We are here to help

Exceptional customer service is central to our company philosophy. Our customer service team, on-site engineers, product designers and supply chain experts are here to advise and assist at all stages of the purchase and fulfilment process.

### Call or email to:

- Check price and availability
- Make technical queries and request product advice
- Request samples
- Place and progress your order
- Request CAD drawings

### Visit our website to:

- Request a quotation
- View product specifications and MOQs
- Find your local distributor
- Request CAD drawings
- Request a catalogue

**Tel:** +44 (0) 117 916 0090

**Fax:** +44 (0) 117 982 2235

**Email:** [sales@rencol.com](mailto:sales@rencol.com)

**Website:** [www.rencol.com](http://www.rencol.com)

### Office opening hours:

Monday to Friday

8.30 AM to 5.00 PM (GMT)



*Nick Dowden, 30 years with Rencol.  
Customer Service Manager*

# Index

## Technical Specifications & Key

Material performance data, tolerances, colour options, quality certifications and product icon key.



Page 5

## Model 01V BH Nylon Bridge Handle

Page 6



## Model 01C BH Nylon Bridge Handle

Page 7



## Model 02 BH Nylon Bridge Handle

Page 8



## Model 03 BH Nylon Bridge Handle

Page 9



## Model 04 BH Nylon Bridge Handle

Page 10



## Model 05 BH Nylon Bridge Handle

Page 11



## Model 06 BH Nylon Bridge Handle

Page 12



## Model 07 BH Nylon Bridge Handle

Page 13



## Model 08V BH Powder Coated Aluminium Bridge Handle

Page 14



## Model 08C BH Powder Coated Aluminium Bridge Handle

Page 15



## Model 09 BH Nylon Bridge Handle

Page 16



## Model 10 BH Duroplast Bridge Handle

Page 17



## Model 11 BH Chrome Plated Steel Bridge Handle

Page 18



**Model 12 BH**  
**Silver Anodised**  
**Aluminium Bridge Handle**

Page 19



**Model 13 BH**  
**Matt Anodised**  
**Aluminium Bridge Handle**

Page 20



**Model 14 BH**  
**Matt Anodised**  
**Aluminium Bridge Handle**

Page 21



**Model 15 BH**  
**Stainless Steel Polished**  
**Bridge Handle**

Page 22



**Model 16 BH**  
**Nylon Safety Handle**

Page 23



**Model 17 BH**  
**Aluminium Ledge Handle**

Page 24



**Model 18 BH**  
**Nylon Bridge Handle**

Page 25



**Model 19 BH**  
**Chrome Plated Steel**  
**Bridge Handle**

Page 26



**Model 20 BH**  
**Nylon Bridge Handle**

Page 27



**Model 21 BH**  
**Polished Steel Bridge Handle**

Page 28



**Model 22 BH**  
**Steel Bow Bridge Handle**

Page 29



**Model 23 BH**  
**Steel Bow Bridge Handle**

Page 30



**Model 24 BH**  
**ABS Snap-in Pull Handle**

Page 31



**Model 25 BH**  
**ABS Two-part Flush Fit Pull Handle**

Page 32



## Technical Specifications & Key

### Thermoplastic

Material: Nylon 6 + Polypropylene (PP)

Working temperatures: Nylon up to 130°C peak and 80°C continuous use. Polypropylene maximum 70°C.

Resistant to: alcohols, esters, aromatic hydrocarbons, dilute alkalis, ketones, oils, fuels, grease, fats, weatherability (including UV light - excludes coloured Nylon) and salt water.

With PP also avoid halogenated hydrocarbons and flammable materials (can hold static charge).

### Reinforced Thermoplastic

Material: Nylon 6 glass filled

Working temperature: up to 180°C peak, 110°C continuous use.

Resistant to: alcohols, esters, aromatic hydrocarbons, dilute alkalis, ketones, oils, fuels, grease, fats, weatherability (including UV light) and salt water.

### Duroplast

Material: Phenolic Based Duroplast (PF)

Working temperature: -30°C to 160°C

Resistant to: diluted mineral acids, alcohols, chlorinated hydrocarbons, aromatic hydrocarbons, detergents, grease, oils, weatherability (including UV light). Avoid high pressure or high impact loads (can shatter).

### Soft-Touch Mouldings

Material: Polypropylene substrate, TPE over-mould. Rencol has standard parts already available in this design, used particularly extensively in both industrial and special needs market products.

### Brass

Material: BS2874 CZ121. Especially recommended for any materials likely to have continued exposure to temperatures below -30°C, where most steel grades become brittle. Also used as a marine grade material when nickel plated.

### Zinc Plated Steel

Material: EN1A leaded-bright zinc passivated.

### Stainless Steel

Material: Standard grade is 304. For medical, catering or marine use recommended grade is 316 - has high chloride resistance.

### Aluminium

Grades are 6061 and A380. Others available on request.

### Colours

Colour options include black, red, yellow, green, blue, white and grey. Other colours are available on request. If you would like to see the colours before ordering, samples can be provided free of charge.

### Thread Depths

Wherever possible thread depths are a minimum of 1.5 x the diameter of the thread.

### Tolerances

In general, our products are produced to the following tolerances:

Bore sizes:  $\pm 0.1\text{mm}$

Outside dimensions:  $\pm 2\text{mm}$

Bridge handle centres:  $\pm 2\text{mm}$

Male thread length:  $\pm 1\text{mm}$

### Tightening Torque

All tightening torques are to Standard 0.5T, which assumes a metal screw fixed into a non-metallic substrate. If the mode of employment is metal to metal assume the tightening force should be double this value.

### Mounting Hardware

Screw shear values are calculated on the basis of the largest metric screw which will fit the bore.

### Load Values

Axial loads are parallel to the hinge pin. Radial loads are perpendicular to it.

**All values are approximate and for guidance only.**

## Key



**Colour options** - RAL colours on request.



**Heavy duty** - Particularly hard wearing item.



**Stainless steel** - Partly or totally stainless steel.



**Fixing from above**



**Fixing from below**



**Multi component build** - Assembly available.



**Soft touch** - TPE over mould. Oil resistant.



Rencol Components is **ISO 9001:2008 Certified**  
Our components are **REACH & RoHS Compliant**



**Fixing type**

Plain bores for fixing with bolts from above.

**Material**

Reinforced nylon (15% glass filled PA6)

**Standard handle colour**

Black

**Finish**

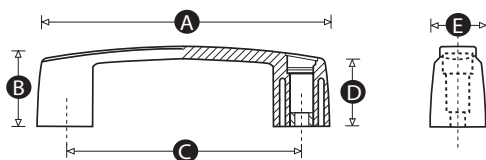
Matt

**Cap colours**

Black caps as standard. Also available with caps in red, grey, white, blue, green, yellow or orange on request. (MOQs apply).

**Thread**

Moulded bore



Part No.	A	B	C	D	E	Bore size (mm)
7758Z	119	35	93	29	26	6.5
7733P	146	40	117	34	29	8.5
7765T	163	45	132	38	31	8.5
7797X	214	50	179	42.5	35	8.5



#### Fixing type

Threaded inserts for fixing with screws from below.

#### Material

Reinforced nylon (15% glass filled PA6)

#### Standard handle colour

Black

#### Finish

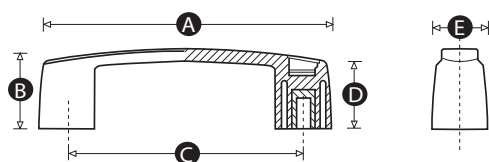
Matt

#### Cap colours

Black caps as standard. Also available with caps in red, grey, white, blue, green, yellow or orange on request. (MOQs apply).

#### Thread

Brass inserts



Part No.	A	B	C	D	E	Thread size
7759V	119	35	93	29	26	M6
7760R	119	35	93	29	26	M8
7762U	146	40	117	34	29	M6
7761Y	146	40	117	34	29	M8
7798T	163	45	132	38	31	M6
7800W	163	45	132	38	31	M8
7999S	213	50	179	43	35	M8
7799P	213	50	179	43	35	M10
7801S	213	50	179	43	35	M12



**Fixing type**

Plain bores for fixing with bolts from above.

**Material**

Reinforced nylon (15% glass filled PA6)

**Standard handle colour**

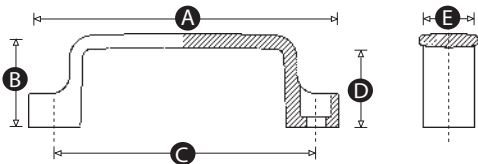
Black

**Finish**

Matt

**Thread**

Moulded bore



Part No.	A	B	C	D	E	Bore size (mm)
9937V	110	36	94	30	21	6.5
9938R	137	41	117	35	27	8.5
9939Y	153	45	132	38	27	8.5
9940U	200	50	179	42	29	8.5





**Fixing type**

Plain bores for fixing with bolts from above.

**Material**

Reinforced nylon (15% glass filled PA6)

**Standard handle colour**

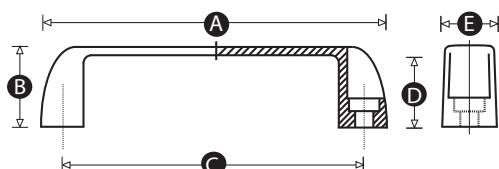
Black

**Finish**

Matt

**Thread**

Moulded bore



Part No.	A	B	C	D	E	Bore size (mm)
11122W	111	35	94	29	22	6.5
11123S	140	41	117	34	26	8.5
11124Z	154	45	132	38	27	8.5
11125V	205	50	179	43	31	8.5
11126R	250	50	225	43	31	8.5



**Fixing type**

Threaded inserts for fixing with screws from below.

**Material**

Reinforced nylon (15% glass filled PA6)

**Standard handle colour**

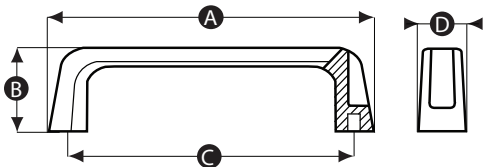
Black

**Finish**

Matt

**Thread**

Brass inserts



Part No.	A	B	C	D	Thread size
12587Z	137	42	117	23	M5
12549X	180	46	160	27	M6



**Fixing type**

Plain bores for fixing with bolts from above.

**Material**

Reinforced nylon (15% glass filled PA6)

**Standard handle colour**

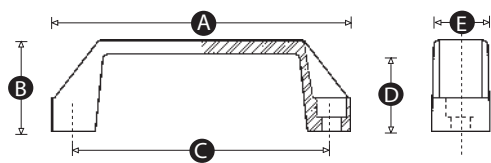
Black

**Finish**

Matt

**Thread**

Moulded bore



Part No.	A	B	C	D	E	Bore size (mm)
15530Q	134	41	117	35	26	6.5
4255Q	134	41	117	35	26	8.5



**Fixing type**

Hexagonally countersunk bore for fixing with bolts from above.

**Material**

Nylon

**Standard handle colour**

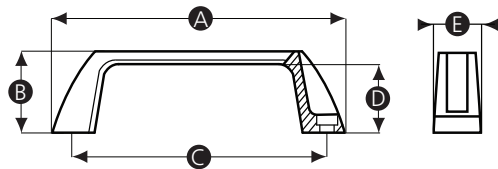
Black

**Finish**

Matt

**Thread**

Hexagonally countersunk moulded bore



Part No.	A	B	C	D	E	Bore size (mm)
12559Q	140	40	120	33	28	6.5
12560X	170	48	150	40	28	6.5



**Fixing type**

Threaded inserts for fixing with screws from below.

**Material**

Reinforced nylon (15% glass filled PA6)

**Standard handle colour**

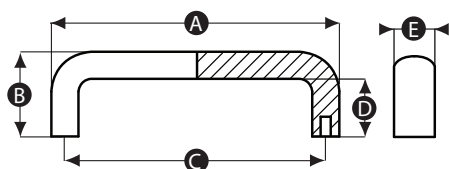
Black

**Finish**

Matt

**Thread**

Brass inserts



Part No.	A	B	C	D	E	Thread size
12550T	107	41	94	29	20	M5
12551P	134	50	117	34	25	M6
12552W	137	50	120	34	25	M6
12553S	148	50	132	34	25	M6
12554Z	168	58	150	40	29	M8
12555V	197	58	179	40	29	M8



**Fixing type**

Plain bores for fixing with bolts from above.

**Material**

Powder coated aluminium

**Standard handle colour**

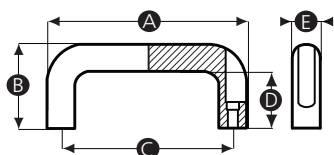
Black

**Finish**

Matt

**Thread**

Machined bore



Part No.	A	B	C	D	E	Bore size (mm)
11809Y	130	53	116	33	26	6.4
11810U	146	55	132	38	26	6.4
11811Q	178	57	164	38	26	6.4
11812X	210	57	196	38	26	6.4



**Fixing type**

Machined threads for fixing with screws from below.

**Material**

Powder coated aluminium

**Standard handle colour**

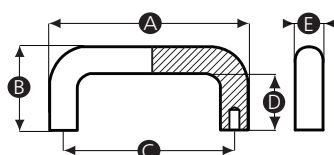
Black

**Finish**

Matt

**Thread**

Machined threads



Part No.	A	B	C	D	E	Thread size
11804W	113	47	100	33	20	M6
11805S	129	53	112	36	26	M8
11806Z	141	51	128	37	20	M6
11807V	177	57	160	38	26	M8
11808R	209	57	192	39	26	M8



**Fixing type**

Hexagonally countersunk bore for fixing with bolts from above.

**Material**

Nylon

**Standard handle colour**

Black

**Caps**

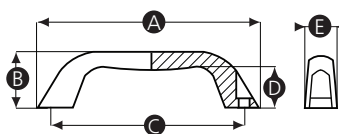
Black caps to conceal fixing head.

**Finish**

Matt

**Thread**

Hexagonally countersunk moulded bore



Part No.	A	B	C	D	Bore size (mm)
12556R	112	38	92	22	5.3
12557Y	141	38	120	24	5.3
12558U	168	44	145	28	6.5





**Fixing type**

Threaded inserts for fixing with screws from below.

**Material**

Duroplast

**Standard handle colour**

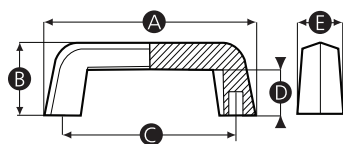
Black

**Finish**

Gloss

**Thread**

Brass inserts



Part No.	A	B	C	D	Thread size
1091P	140	46	113	28	M6
1094Y	185	60	150	37	M6
1096Q	185	60	150	37	M8



#### Fixing type

Machined threads for fixing with screws from below.

#### Material

Chrome plated steel

#### Finish

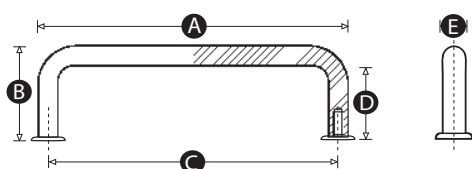
Polished

#### Includes

This product comes complete with nickel plated dress rings, screws and washers.

#### Thread

Machined threads



Part No.	A	B	C	D	E	Thread size
5436R	93	24	88	19	5	M3
5437U	96	33	88	25	8	M4
5438X	104	33	96	25	8	M4
5439P	128	33	120	25	8	M4
5440V	130	41	120	31	10	M5
5441Y	190	41	180	31	10	M5
5442Q	245	41	235	31	10	M5



**Fixing type**

Machined threads for fixing with screws from below.

**Material**

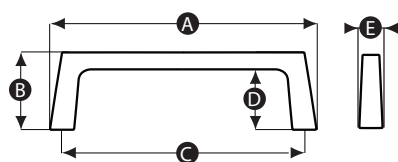
Silver anodised aluminium

**Finish**

Anodised

**Thread**

Machined threads



Part No.	A	B	C	D	E	Thread size
12546Y	110	32	100	25	11	M6
12547U	140	50	125	40	15	M6
12548Q	148	40	130	30	19	M6



**Fixing type**

Machined threads for fixing with screws from below.

**Material**

Matt anodised aluminium

**Standard colour**

Black

**Finish**

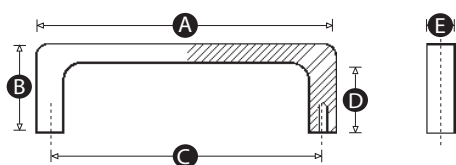
Anodised

**Includes**

This product comes complete with screws and washers.

**Thread**

Machined threads



Part No.	A	B	C	D	E	Thread size
5418X	67	40	55	32	12	M5
5420V	100	40	88	32	12	M5
5421Y	132	40	120	32	12	M5
5422Q	192	40	180	32	12	M5
5423T	247	40	235	32	12	M5


**Fixing type**

Machined threads for fixing with screws from below.

**Material**

Matt anodised aluminium

**Standard colour**

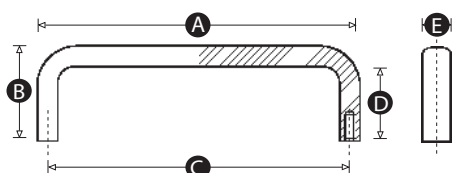
Black or silver

**Finish**

Anodised

**Thread**

Machined threads



Part No.	A	B	C	D	E	Thread size	Colour
5424W	63	40	55	32	12	M5	Black
5425P	63	40	55	32	12	M5	Silver
5426R	96	40	88	32	12	M5	Black
5427U	96	40	88	32	12	M5	Silver
5428X	108	40	100	32	12	M5	Black
5429P	108	40	100	32	12	M5	Silver
5430V	128	40	120	32	12	M5	Black
5431Y	128	40	120	32	12	M5	Silver
5432Q	188	40	180	32	12	M5	Black
5433T	188	40	180	32	12	M5	Silver
5434W	243	40	235	32	12	M5	Black
5435P	243	40	235	32	12	M5	Silver



**Fixing type**

Welded base plate with machined threads for fixing with screws from below.

**Material**

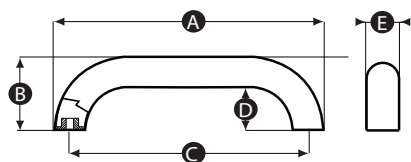
Stainless steel

**Finish**

Electro polished

**Thread**

Machined threads



Part No.	A	B	C	D	E	Thread size
12562P	220	60	195	35	25	M6
12563W	325	75	300	50	25	M6



**Fixing type**

Plain bores for fixing with bolts from above.

**Material**

Nylon (PA6)

**Standard colour**

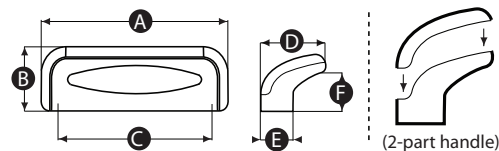
Black base + black cover or orange base + black cover

**Thread**

Moulded bore

**Info**

This handle consists of 2 parts: a base and a cover.



Part No.	A	B	C	D	E	F	Bore size (mm)	Cover + Base Colour
14107V	116	35	96	40	20	24	6.5	Black + Orange
14108R	116	35	96	40	20	24	6.5	Black + Black



**Fixing type**

Machined threads for fixing with screws from below.

**Material**

Anodised aluminium

**Standard colour**

Silver

**Finish**

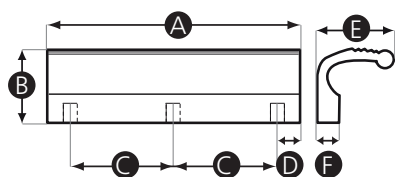
Matt

**Thread**

Machined threads

**Options**

This handle can be produced to custom lengths. (MOQs apply).



Part No.	A	B	C	D	E	F	Thread size
11835T	110	32	45	10	33	10	M6
11836P	140	32	60	10	33	10	M6





**Fixing type**

Plain bores for fixing with bolts from above.

**Material**

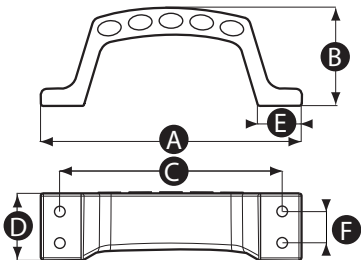
Nylon

**Thread**

Moulded bore

**Info**

This heavy duty handle features a flat edge with protuding areas for extra grip. When mounted on a wall or vertical surface it is suitable for a foot step application.



Part No.	A	B	C	D	E	F	Bore size (mm)
12561T	162	63.5	140	42	27	20	6.5



**Fixing type**

Male threads with nuts for fixing from above.

**Material**

Chrome plated steel

**Finish**

Highly polished

**Thread**

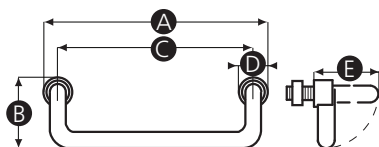
Male thread

**Thread material**

Zinc plated steel

**Info**

This handle has a 90° folding action. For use where minimal protrusion is required.



Part No.	A	B	C	D	E	Thread size	Thread length (mm)
11801X	116	42	100	16	51	M10	15
11802T	138	42	120	18	51	M10	15
11803P	198	42	180	18	51	M10	15



**Fixing type**

Plain bores for fixing with bolts from above.

**Material**

Reinforced nylon (15% glass filled PA6)

**Standard handle colour**

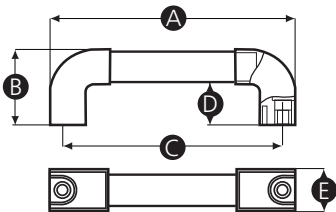
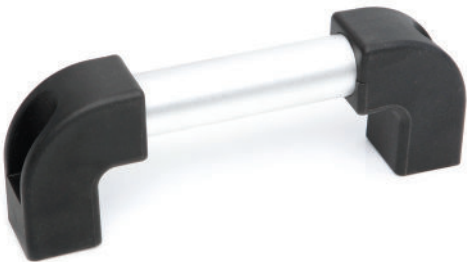
Black ends and silver metal tube.

**Finish**

Matt

**Thread**

Moulded bore



Part No.	A	B	C	D	E	Bore size (mm)
14281S	232	78	210	44	41	10
14282Z	274	78	250	44	41	10



**Fixing type**

Machined threads for fixing with screws from below.

**Material**

Stainless steel

**Finish**

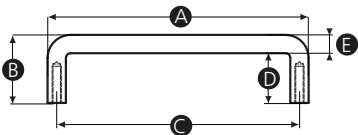
Polished

**Thread**

Machined thread

**Includes**

Stainless steel fixing screws



Part No.	A	B	C	D	E	Thread size
15539Y	114	30	106	22	8	M4



**Fixing type**

Machined threads for fixing with screws from below.

**Material**

Powder coated aluminium

**Colour**

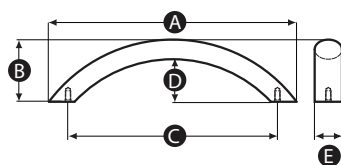
Black

**Finish**

Textured matt

**Thread**

Machined thread



Part No.	A	B	C	D	E	Thread size
14128Z	227	57	192	39	25	M4

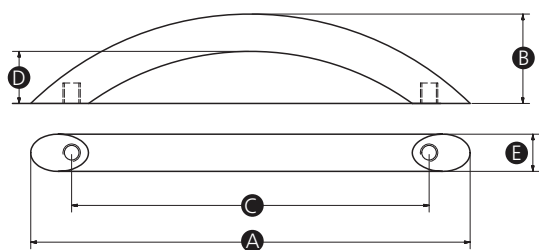


**Material**

Chrome plated steel

**Finish**

Highly polished



Part No.	A	B	C	D	E	Thread size
15901R	118	24	96	14	10	M4
15902R	151	30	128	20	10	M4
16135P	184	35	160	25	10	M4
16136W	221	35	192	25	10	M4
16137S	258	35	224	25	10	M4
16138Z	333	35	288	25	10	M4

**Fixing type**

Quick fit, one piece, snap-in flush fitting

**Material**

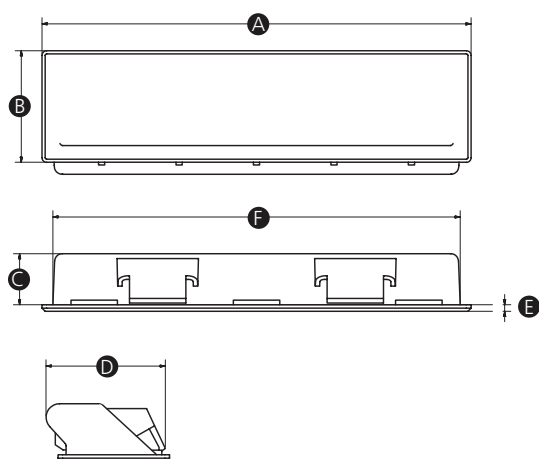
ABS

**Finish**

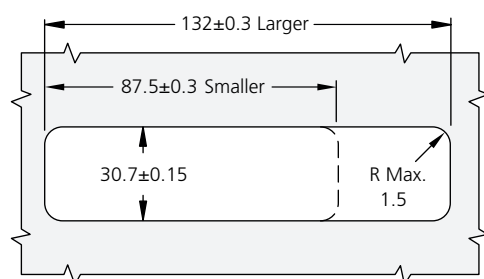
Textured matt

**Colour**

Black



Part No.	A	B	C	D	E	F	Panel thickness
16052S	93	36	16.5	38.2	2	87	1.0 -1.4
16053Z	93	36	16.5	38.2	2	87	1.4 -1.8
16054V	139	36	16.5	38.5	2	132	1.0 -1.4
16051W	139	36	16.5	38.5	2	132	1.4 -1.8

**Cut out**


#### Fixing type

Quick fit, two piece, flush fitting. Complete with screws for assembly.

#### Material

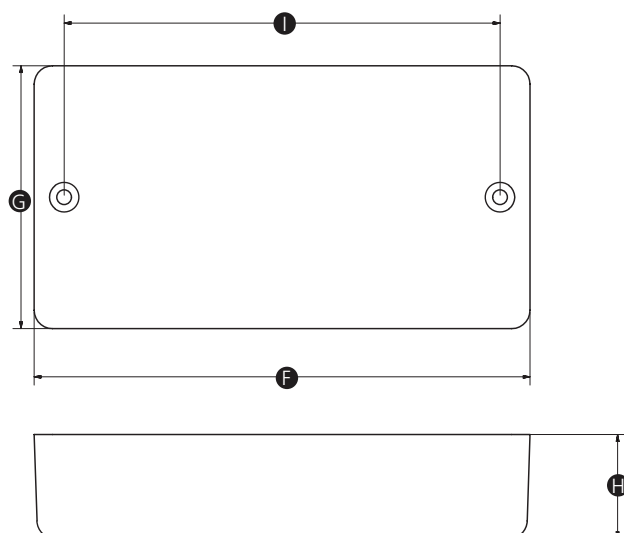
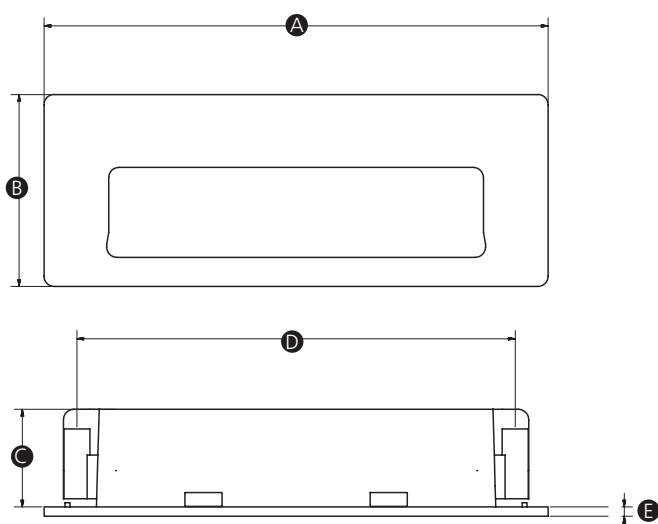
ABS

#### Colour

Black

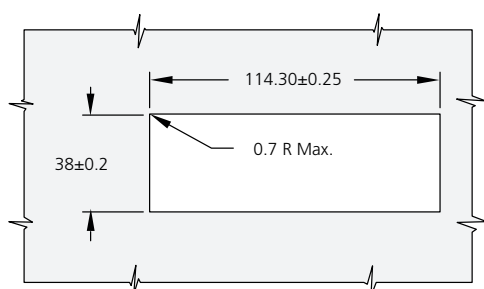
#### Finish

Textured matt



Part No.	A	B	C	D	E	F	G	H	I	Bore size	Panel thickness
16049T	124	47	24	107	2.3	122	64	25.5	107	3.7	1 - 1.8

#### Cut out







A large rectangular area filled with a light gray grid, resembling graph paper, intended for taking notes.

## Modifications & Custom Components

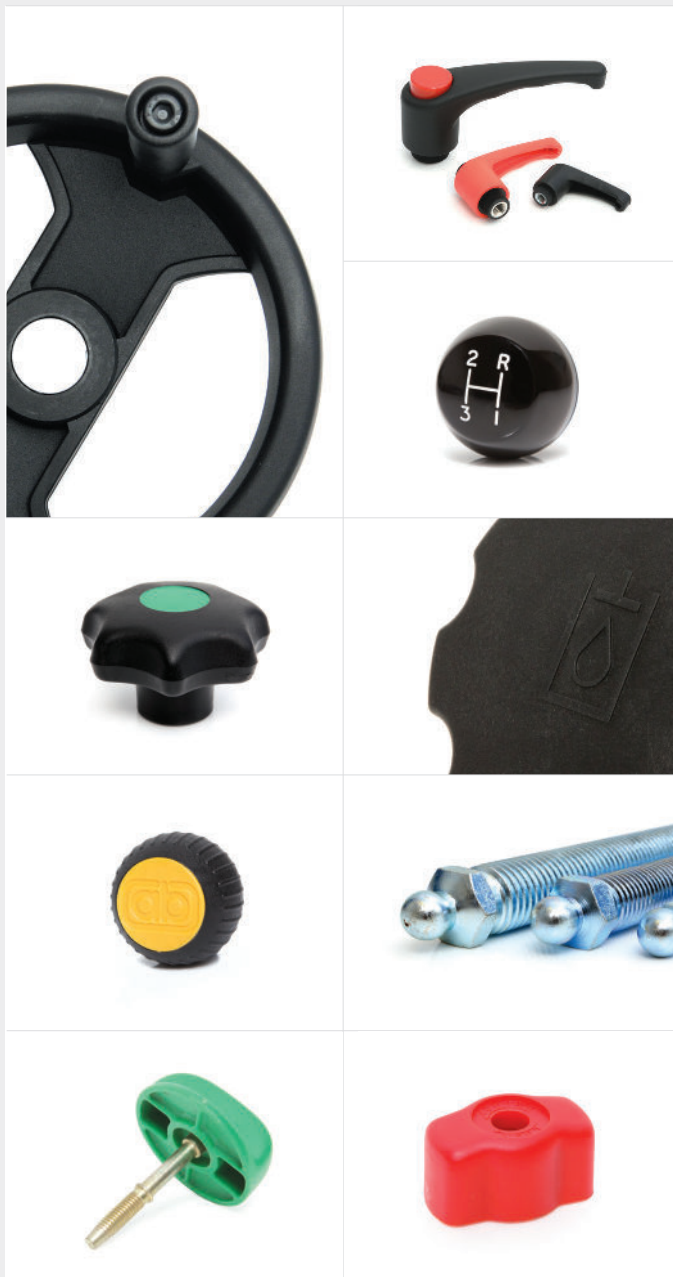
Diverse manufacturing capabilities and experienced on-site technical personnel allows Rencol Components to offer a wide range of product modifications and custom product solutions. We regularly adapt standard components or manufacture custom products to suit our customers' specific requirements. New tooling can be produced quickly and cost effectively with a typical MOQ of just 500 pieces.

### Manufacturing Processes

Plastic & Metal Injection Moulding / Die casting / Machining / Forging / Stamping / Rapid Prototyping / 3D Printing

### Modifications & Custom Options

Thread size & length / RAL Colours / Engraving / Pad-Printing & Screen-Printing / TPE Over mould / Materials / Finishes / Logos





## **Rencol** COMPONENTS

### **Head Office (UK):**

Unit 2 Avonbridge Trading Estate  
Atlantic Road  
Avonmouth  
Bristol BS11 9QD  
United Kingdom

**Tel:** +44 (0) 117 916 0090

**Fax:** +44 (0) 117 982 2235

**Email:** [sales@rencol.com](mailto:sales@rencol.com)

**Website:** [www.rencol.com](http://www.rencol.com)

### **Office opening hours:**

Monday to Friday  
8.30 AM to 5.00 PM (GMT)