



**Material**

Two-part mouldings - Inner moulding Polypropylene - Over moulded with 'Soft Touch' TPE

**Female insert material**

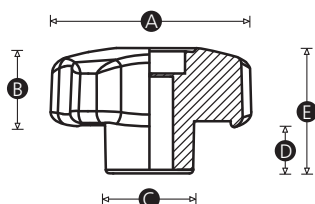
Brass

**Standard colour**

Black

**Cap colours**

Available with caps in many different colours (MOQs apply).



Part No.	A	B	C	D	E	Thread size
10777Q	28	16	12	10	26	M5
10780P	28	16	12	10	26	M6
7037Q	40	17	18	12	29	M6
10790T	40	17	18	12	29	M8
10798U	50	19	21	12	31	M6
10801T	50	19	21	12	31	M8
11118Q	50	19	21	12	31	M10
10809U	60	21	23	13	34	M8
10812T	60	21	23	13	34	M10
11119X	60	21	23	13	34	M12