



Fixing type

Machined threads for fixing with screws from below.

Material

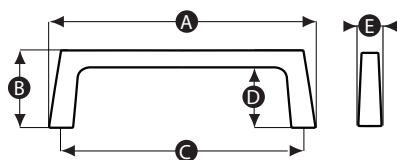
Silver anodised aluminium

Finish

Anodised

Thread

Machined threads



Part No.	A	B	C	D	E	Thread size
12546Y	110	32	100	25	11	M6
12547U	140	50	125	40	15	M6
12548Q	148	40	130	30	19	M6