



**Fixing type**

Plain bores for fixing with bolts from above.

**Material**

Reinforced nylon (15% glass filled PA6)

**Standard handle colour**

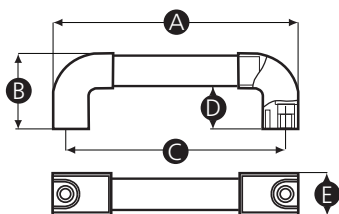
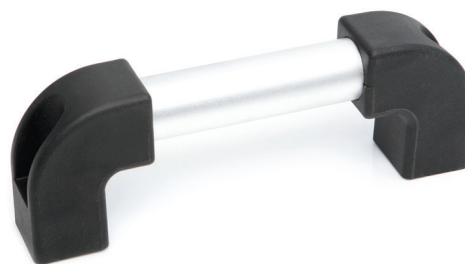
Black ends and silver metal tube.

**Finish**

Matt

**Thread**

Moulded bore



| Part No. | A   | B  | C   | D  | E  | Bore size (mm) |
|----------|-----|----|-----|----|----|----------------|
| 14281S   | 232 | 78 | 210 | 44 | 41 | 10             |
| 14282Z   | 274 | 78 | 250 | 44 | 41 | 10             |